

Coaxial Adapter Series SMA/SMP

Features:

- Low VSWR

Applications:

- Wireless
- Transmitter
- Laboratory Test
- Radar

Electrical

Frequency: DC~18GHz
 VSWR: 1.25 max.
 Impedance: 50Ω

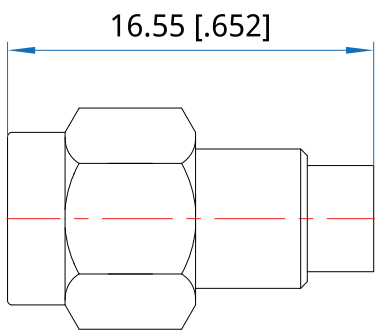
Environmental

Temperature: -55~+85 °C

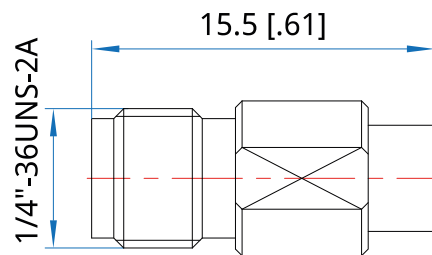
Mechanical

RF Connectors: SMP, SMA
 Mating Life Cycle: 500 cycles
 Outer Conductor: Passivated Stainless Steel
 Dielectric: PTFE
 Inner Conductor: Gold Plated Beryllium Copper

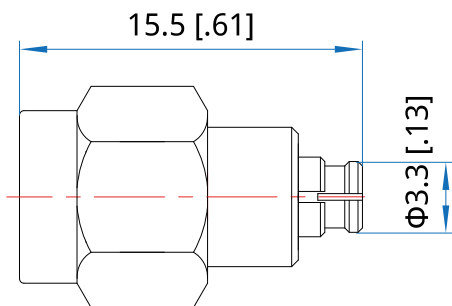
Outline Drawings



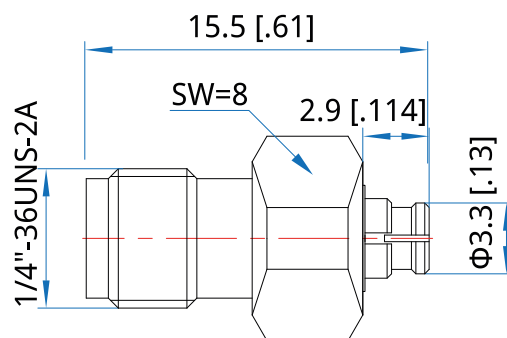
Outline A



Outline B



Outline C



Outline D

Unit: mm [in]
 Tolerance: ±0.2mm [±0.008in]

Interface:

- RFC18-SMm-Mm:** SMP(m) to SMA(m), Outline A
- RFC18-SMm-Mf:** SMP(m) to SMA(f), Outline B
- RFC18-SMf-Mm:** SMP(f) to SMA(m), Outline C
- RFC18-SMf-Mf:** SMP(f) to SMA(f), Outline D