

Coaxial Adapter Series SMA/QMA

Features:

- Low VSWR

Applications:

- Wireless
- Transmitter
- Laboratory Test
- Radar

Electrical

Frequency: DC~18GHz
 VSWR: 1.15 max.
 Impedance: 50Ω

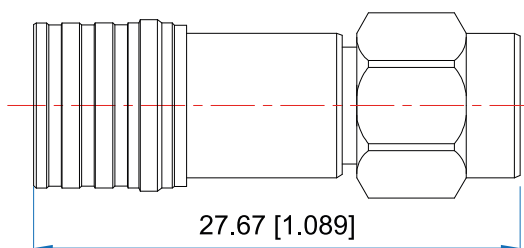
Environmental

Temperature: -60~+165 °C

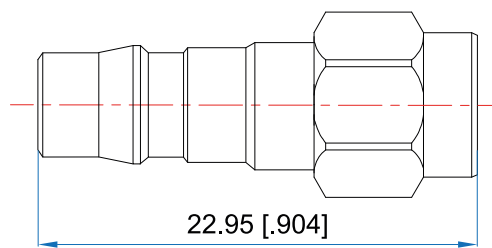
Mechanical

RF Connectors: SMA, QMA
 Mating Life Cycle: 5000 cycles
 Outer Conductor: SUS303 Stainless Steel
 Dielectric: PEI
 Inner Conductor: Gold Plated Beryllium Copper

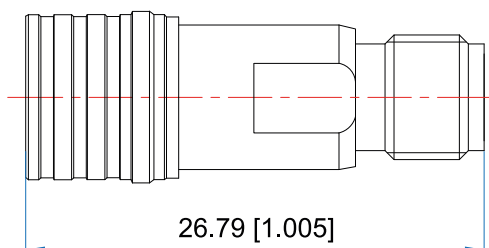
Outline Drawings



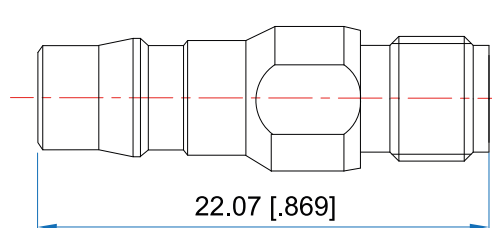
Outline A



Outline B



Outline C



Outline D

Unit: mm [in]

Tolerance: ±0.2mm [±0.008in]

Interface:

RFC18-SMm-Qm: SMA(m) to QMA(m), Outline A

RFC18-SMm-Qf: SMA(m) to QMA(f), Outline B

RFC18-SMf-Qm: SMA(f) to QMA(m), Outline C

RFC18-SMf-Qf: SMA(f) to QMA(f), Outline D