

RFC-ADT-4

COAXIAL ADAPTERS

Coaxial Adapter Series SMA/BNC

Features:

- Low VSWR

Applications:

- Wireless
- Transmitter
- Laboratory Test
- Radar

Electrical

Frequency: DC~4GHz

VSWR: 1.3 max.

Insertion Loss: 0.2dB

Impedance: 50Ω

Environmental

Temperature: -55~+85 °C

Mechanical

RF Connectors: SMA, BNC

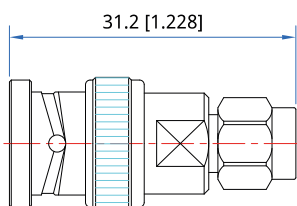
Mating Life Cycle: 500 cycles

Outer Conductor: Nickel Plated Brass

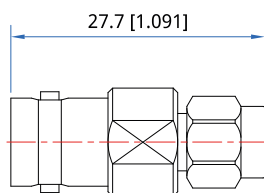
Dielectric: PTFE

Inner Conductor: Gold Plated Beryllium Copper

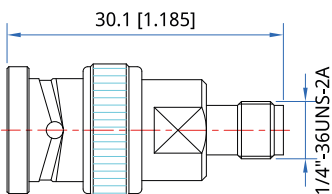
Outline Drawings



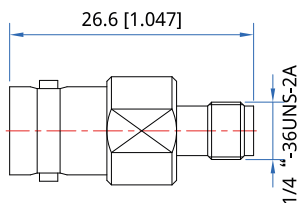
Outline A



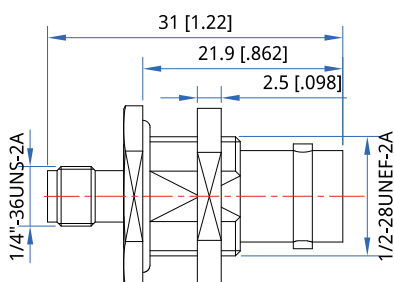
Outline B



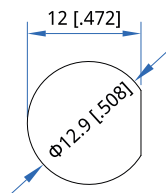
Outline C



Outline D



Outline E



Unit: mm [in]

Tolerance: ±0.2mm [±0.008in]

Interface:

RFC4 Sm-Bm: SMA(m) to BNC(m), Outline A

RFC4 Sm-Bf: SMA(m) to BNC(f), Outline B

RFC4 Sf-Bm: SMA(f) to BNC(m), Outline C

RFC4 Sf-Bf: SMA(f) to BNC(f), Outline D

RFC4 Sf-Bf(BH): SMA(f) to SMA(f) bulkhead, Outline E