

**Coaxial Adapter Series 2.4 mm**

**Features:**

- Low VSWR

**Applications:**

- Wireless
- Transmitter
- Laboratory Test
- Radar

**Electrical**

Frequency: DC~50GHz  
VSWR: 1.2 max.  
Impedance: 50Ω

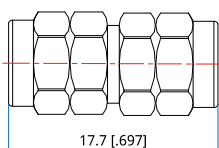
**Environmental**

Temperature: -60~+165 °C

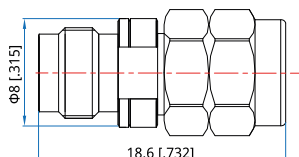
**Mechanical**

RF Connectors: 2.4mm  
Mating Life Cycle: 5000 cycles  
Outer Conductor: Passivated SUS303 Stainless Steel  
Dielectric: PEI  
Inner Conductor: Gold Plated Beryllium Copper

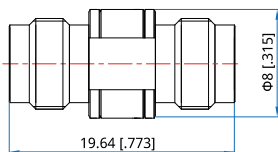
**Outline Drawings**



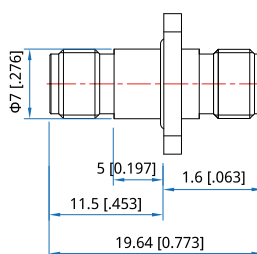
Outline A



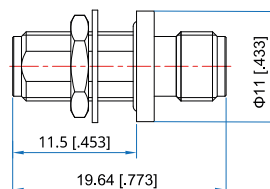
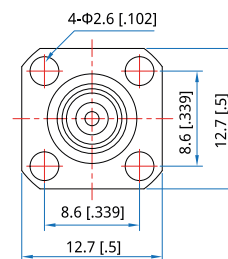
Outline B



Outline C



Outline D



Outline E



Unit: mm [in]

Tolerance: ±0.2mm [±0.008in]

**Interface:**

- RFC50-24m-24m:** 2.4mm(m)/2.4mm(m), Outline A
- RFC50-24m-24f:** 2.4mm(m)/2.4mm(f), Outline B
- RFC50-24f-24f:** 2.4mm(f)/2.4mm(f), Outline C
- RFC50-24f-24f(FL):** 2.4mm(f)/2.4mm(f) flange mount, Outline D
- RFC50-24f-24f(BH):** 2.4mm(f)/2.4mm(f) bulkhead, Outline E