

**Coaxial Adapter Series 1.85 mm**

**Electrical**

Frequency: DC~67GHz  
 VSWR: 1.3 max.  
 Impedance: 50Ω

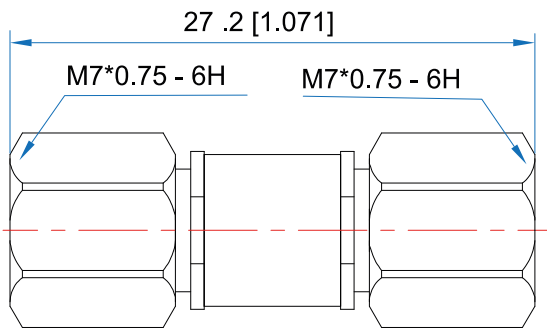
**Environmental**

Temperature: -55~+125 °C

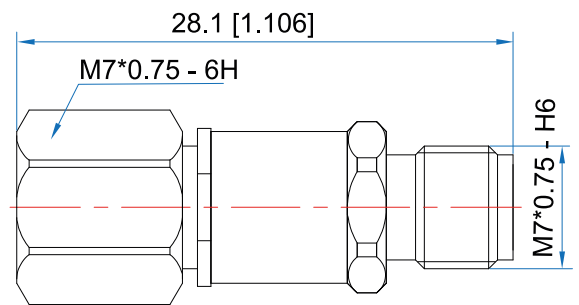
**Mechanical**

RF Connectors: 1.85mm  
 Mating Life Cycle: 1000 cycles  
 Outer Conductor: Passivated SUS303 Stainless Steel  
 Dielectric: PEI  
 Inner Conductor: Gold Plated Beryllium Copper

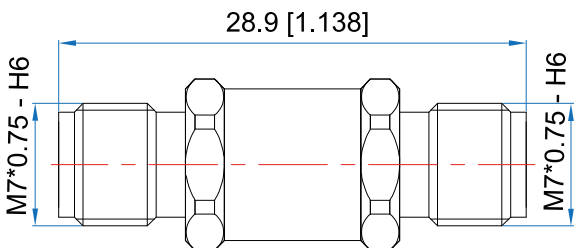
**Outline Drawings**



Outline A



Outline B



Outline C

Unit: mm [in]  
 Tolerance: ±0.2mm [±0.008in]

**Interface:**

- RFC67-185m-185m:** 1.85mm(m)/1.85mm(m), Outline A
- RFC67-185m-185f:** 1.85mm(m)/1.85mm(f), Outline B
- RFC67-185f-185f:** 1.85mm(f)/1.85mm(f), Outline C